



PRIDE IN PLACE

LED BY YOU – BACKED BY UK GOVERNMENT

Workshop facilitators



Yasamin Alttahir, Involve

Inclusive partnership and decision making

Yasamin Alttahir is the Director of Advocacy and Communications. She has two decades of senior leadership experience in international diplomacy, crisis management, and strategic communications across conflict and post-conflict settings.

As Associate Director at the Open Society Foundations, she led global crisis-response programming across multiple countries and advised heads of state and multilateral bodies, including the UN, NATO, and the AU, on global threats to democracy. Her UK government experience spans strategic roles at the Cabinet Office, FCDO, and DEFRA, where she managed cross-government coordination on democratic resilience in Eastern Europe, countered state-sponsored disinformation during the Ukraine conflict, and led major policy initiatives, including COP26 Nature Day.



Dan Crowe, 3ni

Building strong partnerships - local authority perspective

Dan is director of 3ni, a new social value partnership, recently spun-out from Local Trust. 3ni brings together policy, practice, and the latest research and cutting-edge data and diagnostic tools to support local government and public sector partners to work with disadvantaged communities to transform neighbourhoods across the country.



It also hosts the national network for neighbourhood improvement, sharing best and next practice to support community-led regeneration.

He incubated 3ni at Local Trust, where he previously led the policy team, in particular on the work and research programme for the All-Party Parliamentary Group for 'left behind' neighbourhoods, advocating for a Community Wealth Fund, and making the case for C4, the ESRC-funded Centre for Collaboration in Community Connectedness. Dan has a background in local and regional government, working for the elected Mayors of London and in the north east of England, in regeneration policy at the Homes and Communities Agency, and for the think tanks Localis, New Europe, The Young Foundation, and Collaborate. He has been an elected leader in the British co-operative movement, serving as Vice-President of the Co-operative Group where he led on the creation of its community strategy and as a trustee of the Co-operative Foundation. He is a Fellow of the RSA.



Liz Jarmin, Leeds City Council

Building strong partnerships - local authority perspective

Liz joined Leeds City Council in 1999 as part of the city's 1st Community Involvement Team (CIT). She soon progressed to manage the team that led on the development and delivery of the city's large scale social regeneration programmes, managing a budget of over £40m per annum.

In 2007 Liz was appointed as Neighbourhoods Services Manager and whilst in this role, she led on the development of the city's Prevent programme, which continues to support the city and its residents to be less vulnerable to radicalisation.

In 2010 Liz led the city's Community Safety Partnership, here she was responsible for the city's CCTV and security network, Prevent, locality working and the service's commissioning programme.

In 2021 Liz took on her current role as Head of Locality Partnerships. She currently manages a portfolio of services including work to address poverty and inequality in the city's most deprived neighbourhoods, Community Centres, locality-based Youth Services, providing support to the city's 99 Elected Councillors as part of the Councils commitment to democratic renewal and community engagement, overseeing a UKSPF grants programme aimed at



Sadie Oddy, BEAT

Building strong partnerships - local authority perspective

Sadie Oddy leads BEAT with a clear belief in the power of belonging and community. With deep roots in Leeds and many years of community work behind her, she brings warmth, creativity, and a clear strategic vision to the charity. Her work balances everyday connection with residents and longterm leadership — strengthening partnerships, securing opportunities, and guiding the development of BEAT's spaces and services. Sadie is deeply committed to ensuring community voices shape decision making, not only within BEAT but across the wider city, championing lived experience as a driving force for meaningful, lasting change. Central to her approach is supporting people to recognise their own strengths, use their voice, and shape meaningful change.



Alex Boys, Local Trust

Looking ahead: legacy in 2036 and beyond

Alex has over 20 years' experience of supporting resident-led action and community empowerment.

Joining Local Trust in 2024, he leads our Delivery Team, with responsibility for delivery of the Big Local programme, our grant funding process and support offer.

In previous roles, Alex supported development of the Big Local programme at the National Lottery Community Fund and led a local infrastructure organisation in the West Midlands, providing support to resident-led partnerships and community organisations.

Prior to joining Local Trust, Alex held the position of Deputy CEO of NAVCA, the national body for local VCSE infrastructure organisations, where he played a key national role in developing the quality of local community sector support, and building voluntary sector engagement in new health and care structures.

He is a trustee of Black Country Together, a charity supporting community and public sector collaboration.



Kerrie Prowting, Community Vision

Looking ahead: legacy in 2036 and beyond

Kerrie Prowting is a partnerships professional with over 25 years' experience across the public and voluntary sectors. She coordinated the Winterton Big Local programme from 2017 to 2024, supporting resident led planning and delivery, administering grants, and helping local groups build partnerships and turn ideas into action. Kerrie now coordinates the North Lincolnshire VCFSE Alliance, working with organisations across the area to strengthen collaboration, share learning, and connect local insight with wider system partners. She is also a certified ADHD coach and qualified mediator, bringing a strengths based, people centred approach to supporting individuals, groups, and partnerships. Kerrie is particularly interested in what helps neighbourhood working succeed in practice - how trust is built, how power is shared, and how communities sustain momentum over time.

Gill Hutchinson, Big Local area advisor

Setting up and making plans

Gill is an independent consultant and trainer with experience of working with diverse communities in urban, coastal and rural areas throughout the UK. Gill has also delivered work for the Women's National Congress in Southern Sudan and supported local authority officers in Turkey and the University of Rome through a Leonardo funded project to adapt the nationally recognised Planning for Real consultation process to a European context. She has experience of working in a wide variety of regeneration initiatives. Since 2001 when she established her own Company she has delivered work for Regional Development Agencies, Local Authorities, Private Developers, Third Sector Organisations, Community Partnerships and Community Organisations. Since 2012, Gill has been working as a Big Local Rep, now Big Local Advisor and has supported 13 areas during that time.

In some areas she has offered support through the Rep/Advisor role but more recently has taken on the role of Independent Chair to help the Big Local move forward and overcome some of the challenges they were experiencing. She has excellent communication skills and is an experienced facilitator and enabler. She uses a range of action research techniques for gathering information and has an extensive toolbox of visual and participative tools which encourage participation



Nick Plumb, Power to Change

Building strong partnerships - community/third sector perspective

Nick leads Power to Change's think-do work on community renewal, shaping the research, policy and storytelling that help communities build power through community business. He designs and delivers mixed-methods programmes—combining participatory insight with practical testing in place—then translates what works into policy ideas, narratives and coalitions that can shift how institutions invest in communities.

Over the past decade Nick has worked across local economics, cohesion, climate, immigration, democratic reform and devolution, with a consistent focus on how places rebuild resilience, belonging and opportunity. At Power to Change he built the organisation's policy and advocacy function and later brought together policy, research and communications to strengthen external influence. He also served on the Board of the Government's High Streets Task Force, contributing to national thinking on high street renewal and place-based regeneration.

Josiah Sulc, Rooted In

Building strong partnerships - community/third sector perspective

Leaving a career in biomedical sciences, I took a leap into volunteering and soon found myself leading a small charity in Allerton West Bradford, a former council estate, running after-school activities for primary kids. The vision was straightforward: go deep, not wide. We didn't want to just deliver services; we aimed to become a fixture in the community, a trusted, outspoken voice that advocates, encourages, and inspires.

Over the past 15 years, under my leadership, the organisation has built a rare position of trust with statutory agencies, service providers, and, most importantly, the local people themselves. That foundation has allowed us to expand into delivering perinatal and children's activities, peer-led youth provisions, and holistic, family-focused trauma therapies.

From the charity sprang three social enterprise coffee shops, including The Sugar Snap Kitchen. These spaces support long-term unemployed adults and young people through nurturing work experience, training, and real employment opportunities, while generating vital income to sustain our work.



I've also pioneered Bradford's only active community-led housing project via the Allerton Lower Grange Community Land Trust, a registered community benefit society. We've secured a former vicarage (now in planning), are working to save an at-risk community centre, and have our sights set on purchasing our first plot of land from Bradford Council to develop 55 much-needed homes.



Shaheen Warren, Power to Change

Building strong partnerships-community/third sector perspective

Shaheen provides leadership to our Practice and Innovation work, focused on developing partnerships to catalyse our future impact. She works at the intersection of policy and practice innovation, regularly convening partners at local, regional and national level to work alongside community businesses—improving outcomes for people and places and generating insights to influence policy. She brings extensive experience in service design, community engagement and public sector reform, with a focus on building more inclusive and sustainable local economies. She believes in meaningful collaboration at the local level and is passionate about creating the conditions for communities to take power and shape their futures.

Laura Fisher, Local Trust

Practical approaches to measuring success

Laura has worked in Local Trust's research team since summer 2019. She led on the Measuring Change support offer which matched evaluation specialists with Big Local partnerships and plays a key role in gathering the achievements and learning from Big Local areas as part of the Learning from Big Local project.

Before joining Local Trust, Laura worked at London Youth, a membership and advocacy organisation for youth organisations across London. Here, she was involved in programme evaluation and a variety of research projects, including a report on young people and communities.



Jack Loughanane, Local Trust

Practical approaches to measuring success

Jack has worked at Local Trust since August 2023 as a senior researcher. He leads on a range of projects including the Partnership Reviews and Partnership Member Surveys.





Jack's background is in social psychology. Before joining Local Trust, Jack completed his PhD in the University of Limerick, Ireland which was funded by the Irish Research Council. His research utilises advanced quantitative research methods and he has previously taught analysis and research methods at both undergraduate and postgraduate levels.

Rich Warrington, NAVCA

Providing the support infrastructure

Rich joined NAVCA in August 2024. As Deputy CEO, he is responsible for shaping services around the aspirations of members. Rich works with the rest of the team to enable members to access the information and learning resources they need and to learn from each other. Rich is also responsible for the development of the [LIQA](#) and [VCQA](#), enabling members to demonstrate their impact to stakeholders and drive their own improvement. Rich is passionate about the role local infrastructure plays in empowering communities to make change.

Anna Martin, Voluntary Action Leeds

Providing the support infrastructure

Anna is a dynamic cross-sector leader whose career spans education, charity and business, always driven by a commitment to equity, collaboration and meaningful change. Former Teach First alumni, they went on to lead significant operational, cultural and strategic transformations across the UK-designing leadership programmes, building new services, strengthening safeguarding practice and guiding large, diverse teams through complex change.

Now Chief Executive Officer of Voluntary Action Leeds and Director of VALYOU, Anna brings together strategic vision, emotional intelligence and a talent for uniting people around shared purpose. Their work continues to shape stronger communities more resilient organisations and a more connected Third Sector.



Bryony Redwood-Turner, Locality

Investing in community buildings

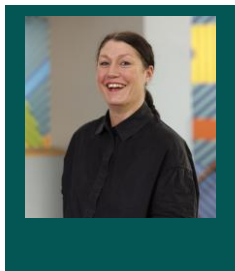
Bryony is a Development Officer at Locality based in Leeds with a strong community background and over a decade working in the VCSE sector. Her experience includes developing relationships in the community, with corporate partners and funders; bid-writing; business planning; project mobilisation and management; impact, evaluation and learning; group facilitation; community engagement; and communications. Examples of this include a business and trading analysis for a Local Infrastructure Organisation and a community engagement exercise to inform the Morley Town Investment Plan, commissioned by the Morley Town Deal Board. Bryony has also worked on several national programmes, providing 1:1 business development and enterprise support to community groups, such as the MHCLG-funded Community Ownership Fund support programme working with at-risk assets across Yorkshire and Humber, Local Trust's Incorporation and Assets support for Big Local groups, and West Yorkshire Combined Authority's Heritage support programme. Bryony also works with the policy team at Locality on our health and wellbeing agenda, contributing to research on the role of the VCSE in health ecosystems, community anchors and the wider determinants of health, and community wealth-building in integrated care systems.

Sam Kirby, The Sutton Centre

Investing in community buildings

Sam has worked in Holmewood, Bradford, delivering youth and community development programs for the past 20 years. Sam's journey started as an apprentice youth and community worker, leading to Youth Work Hub Lead, then Centre Manager, all whilst expanding his experience in Leadership and Governance: this being achieved by being on the board of trustees of both local and district-wide charities, as well as over 10 years spent as a School Governor in three different school settings. Growing up in one of the UK's most deprived areas has created a lived experience where community, opportunity and education provided a means to progress. Sam has delivered a wide range of community programs, which include leading international programs with young people, providing support for young people involved in serious organised crime and developing the Sutton Centre as a community organisation working on improving health, increasing wealth and building community. The centre is a community anchor organisation in the Holmewood area, serving in excess of 1400 residents with over 31,000 visits annually, also providing a wide range of co-located support for all ages. Away from work, Sam's time is spent with his wife and three daughters, also at Valley Parade as a Bradford City fan!





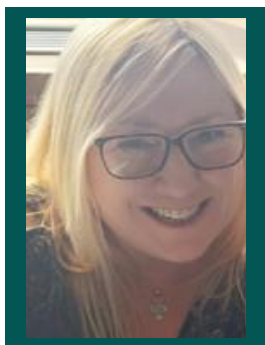
Natasha Almond, Local Trust

Meaningful resident leadership in decision making about resources

Natasha coordinates support for Big Local partnerships in the Northeast region and parts of Yorkshire. She aims to support areas to have the resources, information, advice, and guidance to complete the implementation of each Big Local area plan.

Natasha is experienced in community engagement, and development, setting up several grassroots organisations and movements that include: York Timebank, Refugee Action York, Magnetic Arts, Good Organisation and Coteterminous.

Natasha is passionate about systems change, and Asset Based Community Development and has worked at a strategic level in the transformation of health and wellbeing support across the Yorkshire region. Natasha is an experienced facilitator, developing models to support consensus within community conflict resolution, coproduction processes, and service transformation.



Barbara Slasor, Gaunless Gateway Big Local

Meaningful resident leadership in decision making about resources

Barbara has overseen the strategic use of £1.15 million in Big Local funding, working closely with residents, local authorities, voluntary organisations and other partners to build trust, navigate challenge and sustain collaboration over time. Her work focuses on creating practical ways for diverse partners to work together, particularly in contexts shaped by historical tension, inequality and limited trust.

A strong advocate for inclusive governance and shared leadership, Barbara has supported communities whose voices are often unheard, including contributing to the UK Covid Inquiry through the Communities Matter programme. Alongside her community development role, she brings governance and partnership experience as a school governor, charity trustee, and director of BS Consultancy and Continuum CIC.

At the Pride in Place Winter Event Series, Barbara will share practical insights into building and maintaining cross-sector partnerships, supporting resident leadership, and creating the conditions for long-term, collective action at neighbourhood level.



Nick Gardham, The Centre for Participation and Action

Supporting wider community involvement in plans and decision

Nick is Co-Founder of the Centre for Participation and Action and CEO of Community Organisers.

Over the last 15 years Nick has led and supported the training of 1000s of people in community organising since 2015 as well as working with Government, Public Bodies, Trusts and Foundations and Voluntary Sector Organisations to design and deliver programmes that deliver meaningful participation and engagement. He began his career as a Teach First teacher before moving into direct community work which saw him working on the ground in many communities across the UK and Europe. Nick has secured millions in funding for community organising and asset based approaches.

Through his work Nick has led supported the development of several national campaigns including the #OperationWifi campaign and the Cost of Living Alliance that have united the network at community organisers and built alliances with 100s of organisations.

Alongside Nick's work on the ground he has served as an advisor to various Government departments, Trusts and Community Foundations. Most recently, Nick serves as a co-convenor of the Humanity Project. A national movement to seed 'assembly culture' into neighbourhoods bringing 1000s of people together to listen, deliberate, decide together the future of their places.



Eve Mellor, North Birkenhead Development Trust

Supporting wider community involvement in plans and decision

An experienced community organiser, based in Birkenhead, and Trust Manager of North Birkenhead Development Trust, a local charity running a busy community centre. The trust focuses on community development and organising, with a particular emphasis on food insecurity, and supporting families and the local community to affect change through accessible, place-based support

