



Leeds Community Homes

People Powered Homes

Rob Greenland

Leeds Community Homes &
Empty Homes Doctor

Ursula Klingel

ShangriLeeds

leedscommunityhomes.org.uk

Aims for today



Leeds Community Homes

- Make the case for *People Powered Homes*
- Talk about what we're involved in
- Open up to questions
- A call to action!

Your dream homes



Leeds Community Homes

- Housing Pounds
- Housing Wishlist
- 5 minutes to decide what you want most

Your dream homes



Leeds Community Homes

- In housing we tend to get what we're given
- "It's always a compromise...."
- What could we do to take back control?



Empty
Homes
Doctor







AUDIOBOOK DOWNLOAD

[Download](#)

[TV LISTINGS](#) | [WATCH LIVE](#) | [PROGRAMMES](#) | [WATCH 4oD](#)

Search [Go](#)

[SCRAPBOOK](#)

[NEWS](#)

[APPS](#)

THE GREAT BRITISH PROPERTY SCANDAL

1 million empty homes
(350,000 empty long term)
2 million families in need of a home

[CAMPAIGN HOME](#) | [REPORT AN EMPTY](#) | [CAMPAIGN RESULTS](#) | [NEWS](#) | [VIDEOS](#) | [TV SHOWS](#) | [ABOUT](#)

[Tweet](#)

[Find us on Facebook](#) [Like](#) 10k

TACKLING LEEDS EMPTIES



George attends a day of action in Leeds aimed at finding new solutions to

REPORT AN EMPTY

8000+

...people have reported an empty property so far!

[Report an empty now](#)

Catch up now

[@PropertyScandal on Twitter](#)



(c) Folkus Point c/o



Empty
Homes
Doctor

How we work

- The council writes to owners of empty homes
- Owners get in touch - we meet them at their property
- We provide a detailed report – outlining all their options
- Once they've decided what to do – we help them to bring their home back into use

Seven years empty





Ten years empty



The difference we make

- Over 200 long-term empty homes back in use
- Half a dozen homes sold to social enterprises
- Lots of work for local businesses
- Extra income for the local council
- Savings for a range of public services



LET'S BUILD A BETTER LEEDS

Leeds Community Homes

Leeds Community Homes



Leeds Community Homes

- A Community Land Trust for Leeds
- Create 1000 affordable homes in 10 years
- Create homes ourselves – and support others
- Raise finance – including community shares
- A “community-led” approach to creating homes

leedscommunityhomes.org.uk

Community share offer



Leeds Community Homes

- Community Share Offer launched in October 2016
- Purchase 16 flats in new Climate Innovation District
- Keep 9 for rental, sell 7 at an “intermediate” price
- First homes should be occupied in Spring 2018
- Plan to pay 2% interest from 2020

leedscommunityhomes.org.uk

OUR NEW COLUMNIST

DAVID PRUTTON ON THE BUTTON! 

Why the Whites should target Magpies: **P44**

PLUS...

CRISIS IN THE NHS
 Doctor Angela on why GPs aren't to blame **P27**

City Buzz

HELPING STUDENTS GET AHEAD PAGES 18-19

PLUS: PLANS FOR CITY'S BIGGEST LAP DANCING CLUB: PAGE 5

PEOPLE POWER

Hundreds back affordable housing bid

Joanna Wardill
 @joannawardill

THEY DID IT!
 Hundreds of kind-hearted supporters have pledged more than £600,000 between them to make the first af-

fordable housing project of its kind in Leeds a reality.
 More than 200 people backed Leeds Community Housing's mission to raise the cash to buy 16 city flats which will be let out to those in need at a low cost.
 Bosses at the not-for-profit enterprise called the success 'a miracle' as

the target was smashed in just over a year - meaning supporters were donating at a rate of almost £1,000 per day.
 Gill Coupland, co-director of LCH, said: "It's incredible for Leeds that people have put this money into creating great affordable housing. We're hugely grateful."

"We've done this in a year. We've done it and people have believed in us. I just think it's absolutely incredible."
 The enterprise will buy the apartments - which are situated in the city centre's newly-formed Climate Innovation District on the south bank of the River Aire - from Leeds-based

eco-friendly developer CITU. The community share scheme, believed to be a first for affordable housing in Leeds, offered investors a two per cent return by 2020 on a minimum stake of £100.

Full story on page six.

Bed Bed Linen Curtains Blinds Furniture Gifts

chiltern mills

www.chilternmills.co.uk

Cross Gates Road, Crossgates, Leeds LS15 7PE
 Tel: 0113 2840668

Fabulous Range Of Wallpapers From Leading UK Manufacturers
 Inspired By The Latest In Interior Trends!!
 Over 100 Different Designs To Choose From !!

With Savings Up To **40%**

SOMETHING NEW TO CHILTERN MILLS

Our investors



Leeds Community Homes

- Around 275 investors
- Around 2/3 from Leeds – rest from all over the UK
- Just over a third invested £100 (minimum investment)
- Just under a third invested £1000 or more
- Most popular “referral” – via a friend.

leedscommunityhomes.org.uk





Some of our achievements



Leeds Community Homes

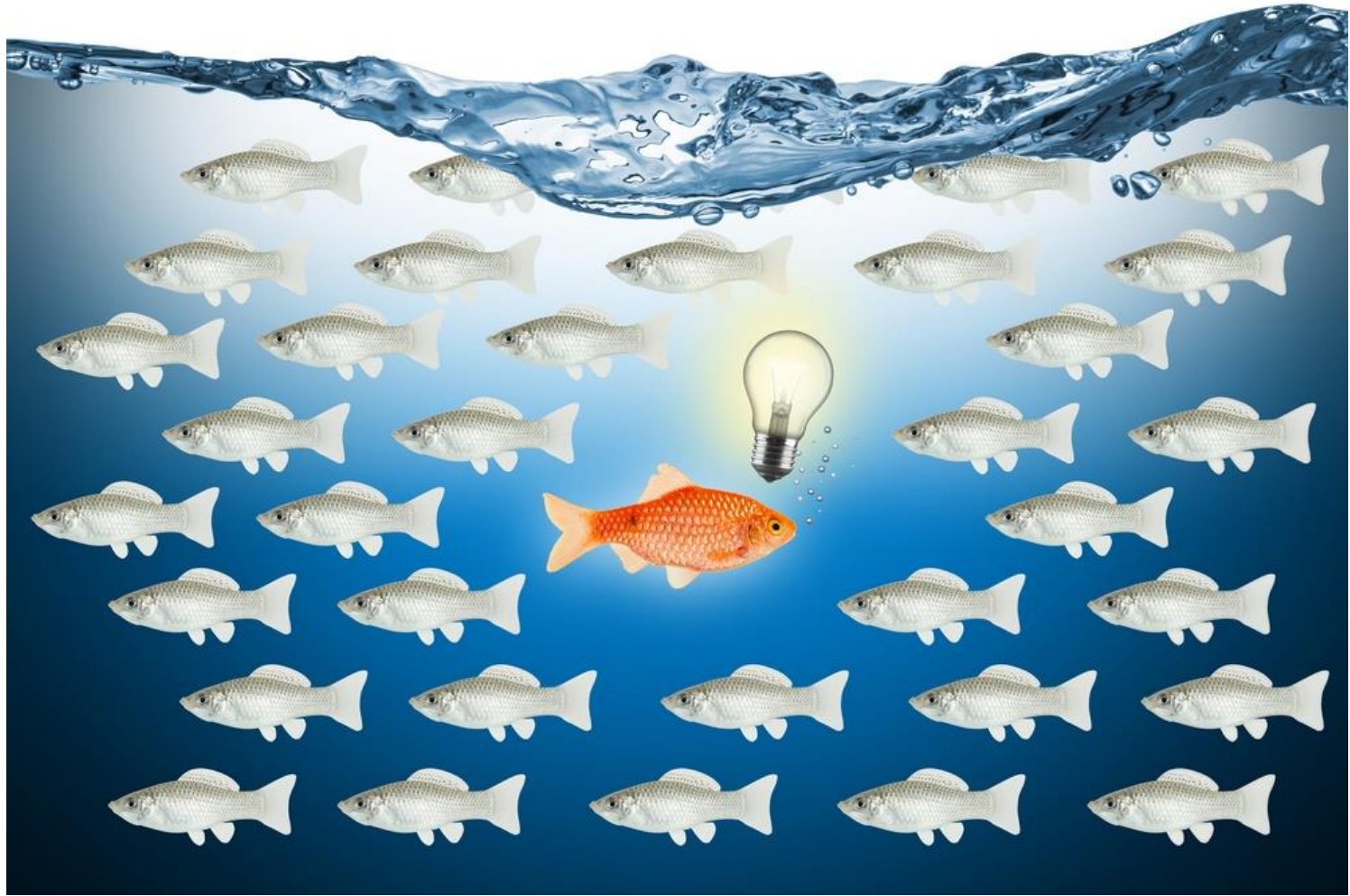
- We've engaged local people in a key local issue – and they've backed us with £££.
- Our members help us open up opportunities – through local knowledge & contacts.
- Some members want to create housing themselves – and we can help
- We're beginning to influence the debate around housing development and affordability in our city

leedscommunityhomes.org.uk



LET'S BUILD A BETTER LEEDS

Leeds Community Homes



A call to action!



Leeds Community Homes

- Faced with a housing crisis, we've teamed up with others to come up with ways to make things better.
- What could you do? Who could you work with? Where might you start?

leedscommunityhomes.org.uk

OUR NEW COLUMNIST

DAVID PRUTTON ON THE BUTTON! 

Why the Whites should target Magpies: **P44**

PLUS...

CRISIS IN THE NHS
 Doctor Angela on why GPs aren't to blame **P27**

City Buzz

HELPING STUDENTS GET AHEAD PAGES 18-19

PLUS: PLANS FOR CITY'S BIGGEST LAP DANCING CLUB: PAGE 5

PEOPLE POWER

Hundreds back affordable housing bid

Joanna Wardill
 @joannawardill

THEY DID IT!
 Hundreds of kind-hearted supporters have pledged more than £500,000 between them to make the first af-

fordable housing project of its kind in Leeds a reality.
 More than 200 people backed Leeds Community Housing's mission to raise the cash to buy 16 city flats which will be let out to those in need at a low cost.
 Bosses at the not-for-profit enterprise called the success 'a miracle' as

the target was smashed in just over a year - meaning supporters were donating at a rate of almost £1,000 per day.
 Gill Coupland, co-director of LCH, said: "It's incredible for Leeds that people have put this money into creating great affordable housing. We're hugely grateful."

"We've done this in a year. We've done it and people have believed in us. I just think it's absolutely incredible."
 The enterprise will buy the apartments - which are situated in the city centre's newly-formed Climate Innovation District on the south bank of the River Aire - from Leeds-based

eco-friendly developer CITU. The community share scheme, believed to be a first for affordable housing in Leeds, offered investors a two per cent return by 2020 on a minimum stake of £100.
Full story on page six.

Bed Bed Linen Curtains Blinds Furniture Gifts

chiltern mills

www.chilternmills.co.uk

Cross Gates Road, Crossgates, Leeds LS15 7PE
 Tel: 0113 2840668

Fabulous Range Of Wallpapers From Leading UK Manufacturers
 Inspired By The Latest In Interior Trends!!
 Over 100 Different Designs To Choose From !!

With Savings Up To **40%**

SOMETHING NEW TO CHILTERN MILLS