

7









# 2008 Trouble ahead



# Worried about the future



# The Incredible Model





If you eat your in



# Food as the glue

- Actions not words
- Use the resources of the community
- Sometimes you have to just do it
- Reconnect with our landscape
- Try anything
- Be brave
- The prisons are full.

A white ceramic plate with a gold rim, viewed from a slightly elevated angle. The plate is empty and has a subtle concentric ring design near the center.

**Community**



It is better to ask for forgiveness than permission– sometimes





# Grow trust





# Church Veg





# Naughty but nice!





# Medicinal herbs





# The Police Station









# We can eat and talk.





# simple pleasures



Having fun –its not hard.





# Parades and celebrations





# Involve Children





It's the simple stuff that works











# Apples growing at the Clinic





# Taste the Landscape



# Cooking in the Street





# We like a little danger





The streets are a  
classroom.





















Incredible Edible  
Todmorden

LOCAL  
FOOD

BRACEWELLS

ALL OUR OWN  
HOME  
PRODUCED  
LOCAL  
FARM

BEEF



BRACEWELL'S  
BUTCHERS

Our Own Farm

Beef and Lamb born  
and reared in Cliviger,  
5 miles away.

Local Free range eggs From Waladen  
and Crosstone.

Local pork

Home reared Pork

Home reared Mutton

Gluten-Free Sausages + Burgers





# Starting off small







Incredible Edible  
Todmorden

LOCAL  
FOOD

Little Valley Brewery  
Chilled & delicious  
or room temp if you prefer  
£3.50





# We did it– created employment





# Two not for profit companies

- Teaching horticulture skills
- Aquaponics
- Permaculture
- Employing apprentices to be the growers of the future









The logo for 'incredible farm' is centered in a white oval. The word 'incredible' is in a green, lowercase, sans-serif font, and 'farm' is in a brown, lowercase, serif font. A small green leaf icon is positioned to the left of the 'i' in 'incredible'.



# Money

- Its just an experiment
- We were lucky
- Good things happened



# Vegetable tourism





# Todmorden Green-Route Map

## Key:

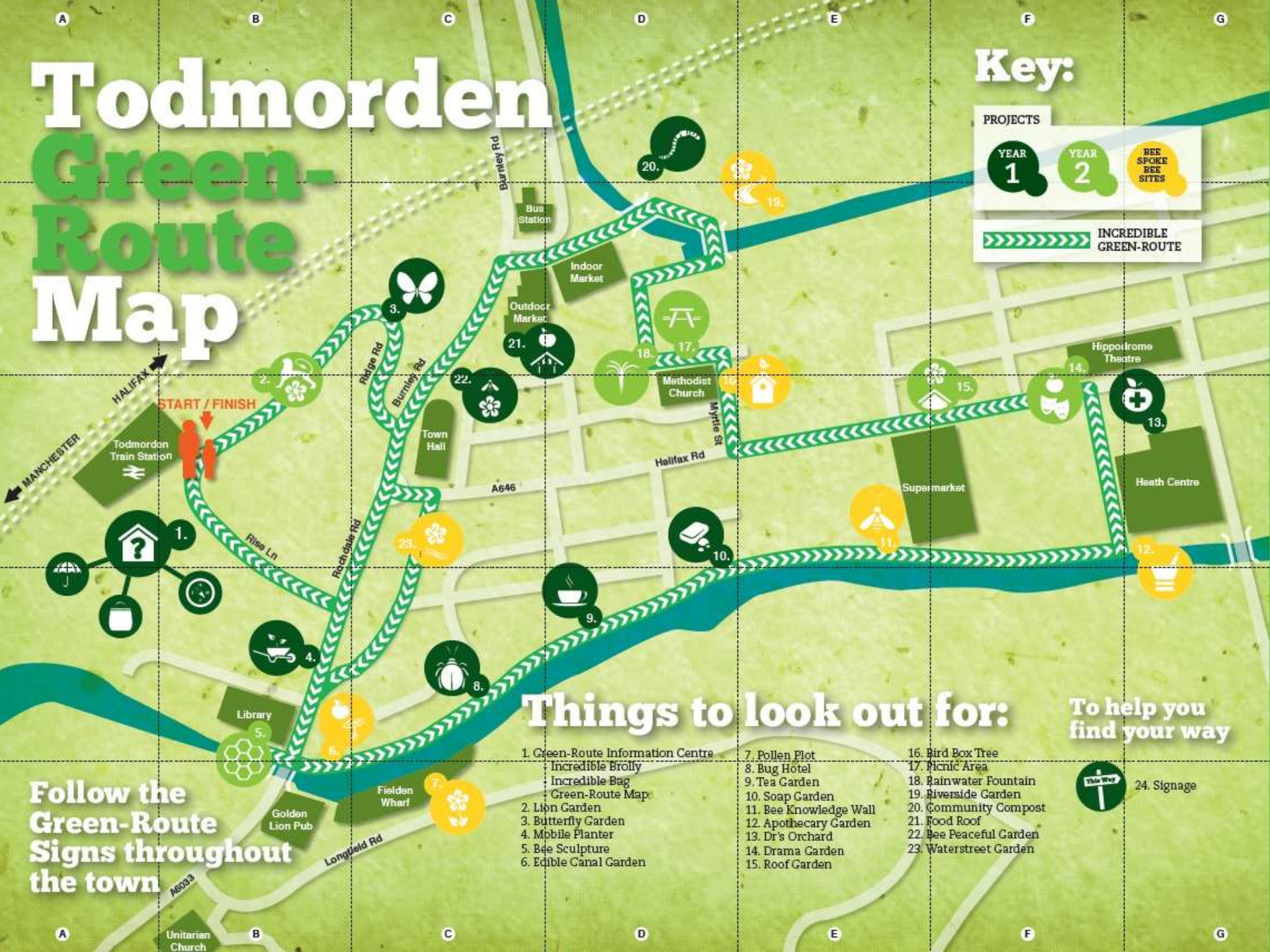
### PROJECTS

YEAR  
1

YEAR  
2

BEE  
SPOKE  
BEE  
SITES

INCREIBLE  
GREEN-ROUTE



START / FINISH

## Things to look out for:

To help you  
find your way

Follow the  
Green-Route  
Signs throughout  
the town

1. Green-Route Information Centre  
Incredible Bröll  
Incredible Bag  
Green-Route Map
2. Lion Garden
3. Butterfly Garden
4. Mobile Planter
5. Bee Sculpture
6. Edible Canal Garden

7. Pollen Plot
8. Bug Hotel
9. Tea Garden
10. Soap Garden
11. Bee Knowledge Wall
12. Apothecary Garden
13. Dr's Orchard
14. Drama Garden
15. Roof Garden

16. Bird Box Tree
17. Picnic Area
18. Rainwater Fountain
19. Riverside Garden
20. Community Compost
21. Food Roof
22. Bee Peaceful Garden
23. Waterstreet Garden

24. Signage























WEST YORKSHIRE  
POLICE

Distress  
Access at  
1987

WEST YORKSHIRE  
POLICE

Celebrate with us on Bank Holiday Monday  
**The Incredible Green Route Opening**  
Plus... **Jubilee Day Tea Party @ 2pm on the Market**  
*Bring a Picnic - Food Stalls - Entertainment - Pollination Parade*

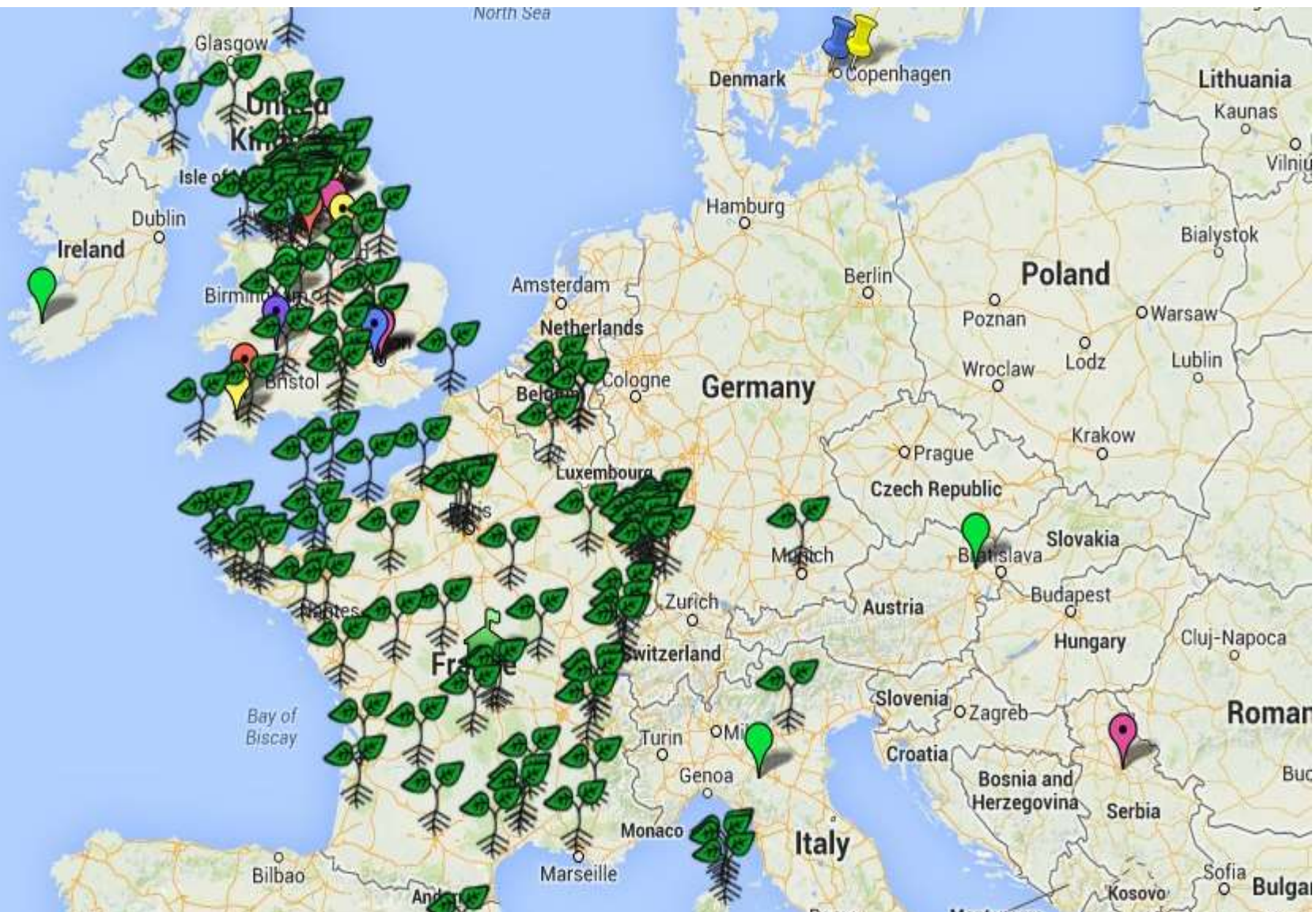








# Its growing .....









**Et puis, ça pousse aussi devant l'Assemblée Nationale au Parlement du Québec !**





# Morocco





We look after our comrades.





# We believe

- In Joy
- In community
- Anything is possible
- Time is short
- The planet is in trouble
- Action not words



# People have power





We have seen the power of small  
actions





KINDNESS





Using kindness we know we can  
grow a better future.

